

		Techno-Commercial Bid (To be filled by supplier and submit with offer)			
Details Description of item #1		AUX. CABLE AND CONDUIT ARRGT. AS PER ANNEXURE-1 AND REF. DRG. 14031040385, REV.01 (TOTAL NO. OF MACHINES = 2 NOS.)	Qty- 02 Nos.		
Details Description of item #2		COMMISSIONING AND INSTALLATION OF AUX. CABLE AND CONDUIT ARRANGEMENT ON MOTOR AT BHEL WORKS AS PER ANNEXURE -1 AND REF. DRG. 14031040385, REV.01 (TOTAL NO. OF MACHINES = 02 NOS.)	Qty- 02 Nos.		
<p>(1) THIS IS GEM ENQUIRY. (2) BHEL STD T&C BP 200102C. [AS AVAILABLE AT B2B PORTAL (HTTPS://BPL.BHEL.COM/MM/)] ARE APPLICABLE. (3) A COPY OF UAM CERTIFICATE TO BE SUBMITTED IF THE BIDDER COVERED UNDER MSMED (4) BHEL STANDARD PENALTY CLAUSE APPLICABLE. (5) OFFER OF VENDORS WHO OR WHOSE OEM IS ON BHEL MISCC / UNIT / CORPORATE LEVEL HOLD OR BANNED / DEBARRED, WILL NOT BE CONSIDERED. NOTE- . Any amount on account of recovery from consigner/supplier under any condition shall be liable to be adjusted against any amount payable to the consigner/supplier against any running bills. In case of breach ,of contract, wherever the value of security instruments like performance bank guarantee available with BHEL against the said contract is at least 10% of the contract value, the same be encashed. In case the value of the security instruments available is less than 10% of the contract value, the balance amount be recovered from other financial remedies (i.e. available bills of the contractor, retention amount, etc. With BHEL) or legal remedies be pursued. The balance scope shall be got done independently without risk & cost of the failed supplier/ contractor.Further, levy of liquidated damages, debarment, termination, de-scoping, shortclosure,etc., shall be applied as per provisions of the contract.</p>					
Item Description :			ITEM #1- -Qty-02 Nos..	ITEM #2- -Qty-02 Nos..	
S. N.	ELEMENTS	Standards			Remarks, if any
1	Quotation Reference & date	As per supplier			
2	HSN / SAC code	As per supplier			
3	GST TYPE & ITS PERCENTAGE APPLICABLE Item wise mentioned in the offer (IGST/CGST+SGST/UGST)	As per supplier			
4	E-Mail	As per supplier			
5	Phone/Mobile	As per supplier			
6	Contact Person	As per supplier			
7	Order to be placed on	As per supplier			
8	Address	As per supplier			
9	Delivery Destination: - The material is required to be supplied to FOR BHEL Bhopal with all freight charges on paid basis inclusive of P&F charges,insurance etc. DELIVERY OF ITEM 02 IS TENTATIVE AND ACTUAL DELIVERY WILL BE WITHIN 04 DAYS FROM THE START OF INSTALLATION AND COMMISSIONING. VENDOR WILL START INSTALLATION AND COMMISSIONING WITHIN 2-3 WEEKS FROM RECEIPT OF INTIMATION FROM BHEL.	Yes			
10	Quoted for all the items of tender enquiry	Yes / No. (If "No" please mention item number of regretted items)			
11	Technical Specifications	Accepted as per enquiry / If any deviation (please mention the deviation)			
12	TC , GC and ALL Inspection report as per tender enquiry and specification will be submitted along with each consignment.	Yes (In case of "No" your offer may be rejected).			
13	Brand Name, If any.	As per supplier			
14	Supply from (place)	As per supplier			
15	Are you registered under MSMED ACT 2006 as small or micro.	Yes / No (If select Yes, please enclosed valid UDYAM registration certificate)			

16	<p>Payment terms: For item -01: 80% payment after receipt & acceptance of material at BHEL, Bhopal against SRV within 45/60/90 days (as applicable) and payment of balance 20% (of it#01) after successful completion of item#02; and upon submission of completion report and MoM (duly signed by BHEL/Supplier) of item #02 (COMMISSIONING & DEMONSTRATION)</p> <p>For item 02: -100% payment of COMMISSIONING & DEMONSTRATION upon submission of successful work completion report and MoM (duly signed by BHEL/Supplier) within 45/60/90 days (as applicable) on pro-rata basis. .</p>	<p>90 days /60days/ 45 Days (If supplier is MSE, please select 45 days, 60 days for medium and if supplier is non -MSE or Trader/Dealer/Agent, please select 90 days)</p>			
17	<p>Penalty Clause: - Penalty shall be 0.5% of the total order value per week of delay or part thereof, subject a maximum of 10% of the total order value (Please refer clause 9 of GTC - BP200102C).</p>	<p>Yes / No (In case of "No", your offer will be loaded suitably)</p>			
18	<p>Acceptance of General Terms and Conditions of enquiry (Form No. BP- 200102C) (available at B2B site of BHEL Bhopal). https://bpl.bhel.com/mm/</p>	<p>Yes (In case of "No" your offer may be rejected).</p>			
19	<p>Kindly confirm whether other family firms or sister concern affiliates / subsidiary firms are participating in the same tender, so as to eliminate the possibility of cartel formation. (if yes kindly attach filled, sign & sealed copy of Annexure-IX).</p>	<p>Yes/NO</p>			
20	<p>Confirm whether bidder is Manufacturer or Trader or Dealer or Agent of items under enquiry. In case of Trader or Dealer or Agent, please furnish authorization certificate from OEM along with offer.</p>	<p>As per supplier</p>			
21	<p>I/We hereby certify that the quoted items(s) offered by us in this enquiry is /are having local content (in %) of</p>	<p>As per supplier</p>			
22	<p>I/We hereby certify that the local content % certified above is in line with definition of local content given in Public Procurement (Preference to Make in India), Order 2017 Dtd. 4-6-2020 and I/We qualify as (Class-I/Class-II/Non-Local supplier – Fill in one which is applicable).</p>	<p>As per supplier [Class I – Equal to or more than 50%, Class II – More than 20% but less than 50%, Non - Local :Less than or equal to 20%] [NOTE: Please provide Certification regarding local content on your letter head for the quoted items with seal & sign.]</p>			
23	<p>Repackaging/ Refurbishment/ Rebranding of imported products are not to be considered for calculation of local content or Domestic Value Addition (DVA). Hence, imported items sourced locally from resellers/ distributors, having such local/ domestic value addition shall be excluded from local content. The license fees/royalties paid/ technical charges paid out of India shall be excluded from local content calculation. To ensure that imported items sourced locally from resellers/distributors are excluded from calculation of local content, procuring entities to obtain from bidders, the cost of such locally-sourced imported items (Inclusive of taxes) along with break-up on license/royalties paid/technical expertise cost etc. sourced from outside India. For items sold by bidder as reseller, OEM certificate for country of origin to be submitted.</p>	<p>Applicable for class II Vendors Only.</p>			

24	Vendor have to Mention Category as per Udyam Certificate SC/ST/OBC/GENDER	AS PER SUPPLIER			
25	Address of location at which the local value addition is made:	As per supplier			
25	Please provide GEM Seller ID	As per supplier			
26	Bid Validity is 90 Days	Accepted as per enquiry			
27	By filling "Yes" in adjacent Box, I hereby declare & confirm that the details furnished above are true and correct to the best of my knowledge and belief and I undertake to inform you of any changes therein immediately. In case any of the above information is found to be false or untrue or misleading or misrepresenting, I am aware that I may be held liable for it.	Yes / No			

1) Deviation in any commercial condition shall be suitably loaded in the offered price.

2) In case of any conflict, confirmation by vendor provided here will supersede.

For supply orders placed on Indian Suppliers: Irrespective of the value of the invoice amount, the bidder / vendor should necessarily upload the despatch & invoice details on BHEL SUVIDHA portal at <https://suvidha.bhel.in/suvidha/>, prior to despatch. All documents as per PO checklist, along with additional documents (if any), must be uploaded on the portal. It is mandatory that tax invoices with a net amount (including taxes) exceeding Rs five lakhs uploaded on the portal are digitally signed using a Class 3 Digital Signature Certificate (DSC) issued by a licensed Certifying Authority. The material will not be accepted inside BHEL in absence of the above.

Name of Supplier:.....

Seal & Sign of supplier

Annexure to Techno-commercial bid
Conflict of Interest among Bidders/Agents Declaration

Ref. Date

To
Bharat Heavy Electricals Limited
Piplani, Bhopal-462022

Subject: - Declaration regarding Conflict of Interest among Bidders/Agents

Reference: Tender Enquiry No-.....

Name of item(s):

Dear Sir,

Treatment of cases regarding conflict of interest:

The bidder notes that a conflict of interest would said to have occurred in the tender process and execution of the resultant contract, in case of any of the following situations: 1) If its personnel have a close personal, financial, or business relationship with any personnel of BHEL who are directly or indirectly related to the procurement or execution process of the contract, which can affect the decision of BHEL directly or indirectly. 2) The bidder (or his allied firm) provided services for the need assessment/ procurement planning of the Tender process in which it is participating. 3) Procurement of goods directly from the manufacturers/ suppliers shall be preferred. However, if the OEM/ Principal insists on engaging the services of an agent, such agent shall not be allowed to represent more than one manufacturer/ supplier in the same tender. Moreover, either the agent could bid on behalf of the manufacturer/ supplier or the manufacturer/ supplier could bid directly but not both. In case bids are received from both the manufacturer/ supplier and the agent, bid received from the agent shall be ignored. However, this shall not debar more than one Authorised distributor (with/ or without the OEM). from quoting equipment manufactured by an Original Equipment Manufacturer (OEM) in procurements under a Proprietary Article Certificate. 4) A bidder participates in more than one bid in this tender process. Participation in any capacity by a Bidder (including the participation of a Bidder as a partner/ JV member or sub-contractor in another bid or vice-versa) in more than one bid shall result in the disqualification of all bids in which he is a party. However, this does not limit the participation of an entity as a sub-contractor in more than one bid if he is not bidding independently in his own name or as a member of a JV. The Bidder shall declare that they have read and understood the above aspects, and the bidder confirms that such conflict of interest does not exist and undertakes that they will not enter into any illegal or undisclosed agreement or understanding, whether formal or informal with other Bidder(s), in this regard. This applies in particular to prices, specifications, certifications, subsidiary contracts, submission or non submission of bids or any other actions to restrict competitiveness or to introduce cartelization in the bidding process. In case, the Bidder is found having indulged in above activities, the same will be considered as a violation of the tender conditions, and suitable action shall be taken by BHEL as per extant policies/ guidelines. - Duly filled, seal and signed declaration to be submitted by bidders with Part1- techno commercial offers of each tender.

Yours very truly,
..... (authorized signatory of company with seal)
..... (firm name)



BP 200102C

BHARAT HEAVY ELECTRICALS LIMITED, BHOPAL GENERAL TERMS AND CONDITIONS OF ENQUIRY

Annexure 1

Format - Self Certificate for MII

CERTIFICATION REGARDING MINIMUM LOCAL CONTENT IN LINE WITH REVISED PUBLIC PROCUREMENT (PREFERENCE TO MAKE IN INDIA), ORDER 2017 DATED 19.7.24 AND SUBSEQUENT ORDER(S)

(To be provided on the Letter Head of the Entity/Firm)

To,

_____ (Write Name and Designation of Officer of BHEL inviting the Tender);

Bharat Heavy Electricals Limited,
Piplani, Bhopal, MP-462022

Ref : 1) BHEL NIT/Tender Specification No: _____,
2) Name of items : _____
3) All other pertinent issues till date _____

We hereby certify that the items/works/services offered by _____ (specify the name of the organization here) has a local content of _____ % .

The local content % certified above is in line with definition of Local content given in point no 2 of Public Procurement (Preference to Make in India), Order 2017 Revision dated 19.7.2024 issued by DPIIT and subsequent order(s) to qualify as _____ (Class-I/ CLASS-I I/ Non-Local supplier-fill in one which is applicable) local supplier.

The details of the location(s) at which the local value addition is made are as follows:

We confirm that the following has not been considered for calculation of local content:

- Imported items sourced locally from resellers/distributors.
- The license fees/ royalties paid/ technical charges paid out of India
- Refurbishment/Repackaging/ Rebranding of imported products
- services such as transportation, insurance, installation, commissioning, training and after sales service support like AMC/CMC etc.

**We confirm that since contract involves supply of multiple items, weighted average of all items has been taken while calculating the local content.

I hereby declare that the details furnished above are true and correct to the best of my knowledge and belief. In case any of the above information is found to be false or untrue or misleading or misrepresenting, I am aware that I may be held liable for it.

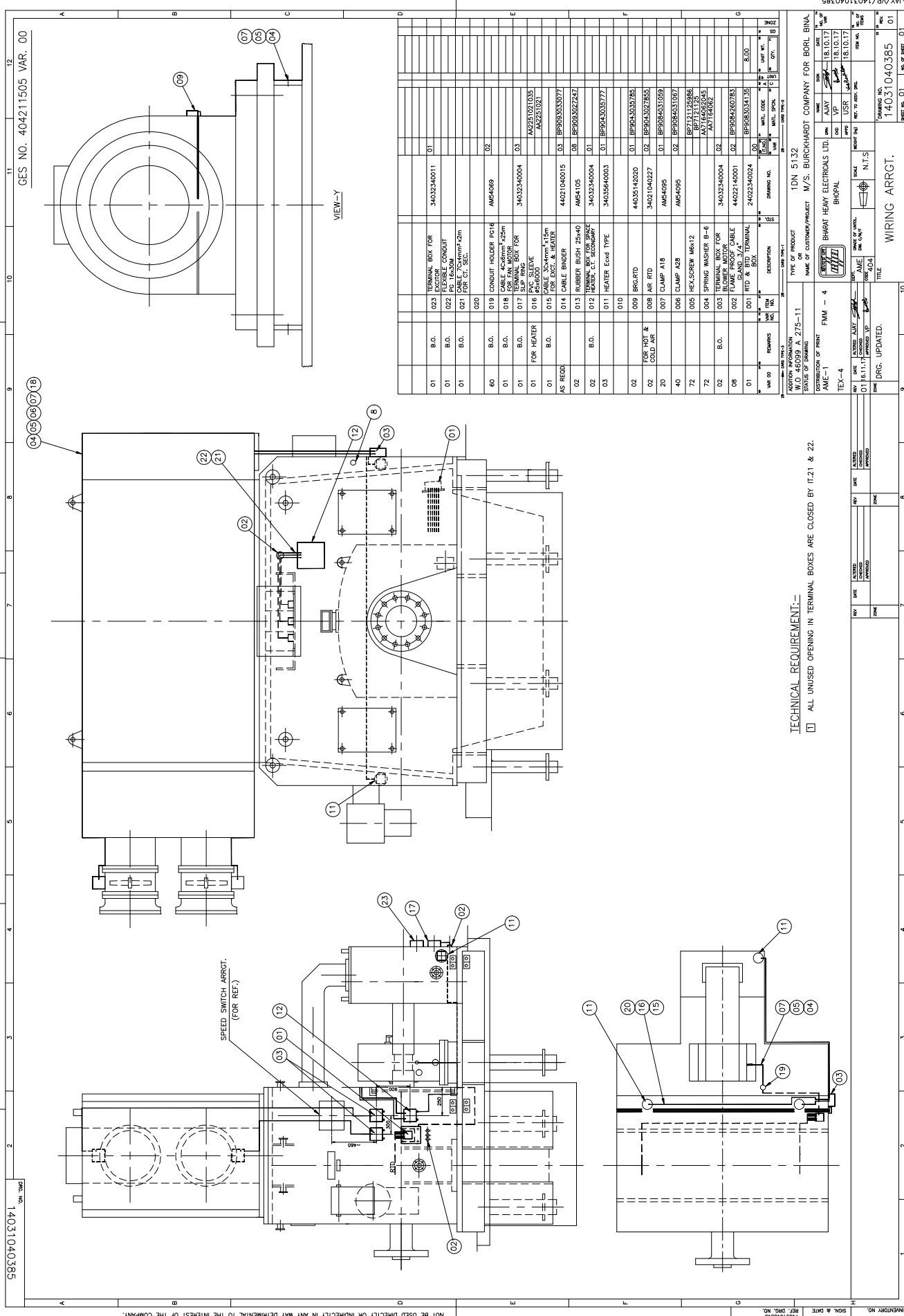
(Signature, Name, Designation, Date, Place & Seal of
Authorized Signatory of the Bidder)

** - Strike out whichever is not applicable

Note: For evaluation of qualification of bidder:

1. Bidder has to submit the above format, duly filled & signed by authorized signatory.
2. For items sold by bidder as reseller, OEM certificate for country of origin to be submitted.

FIRST ANGLE PROJECTION
14031040385



GES NO. 404211505 VAR. 00

(ALL DIMENSIONS ARE IN MM)

THE INFORMATION ON THIS DOCUMENT IS THE PROPERTY OF BHARAT HEAVY ELECTRICALS LIMITED. IT MUST NOT BE USED DIRECTLY OR INDIRECTLY IN ANY WAY DETRIMENTAL TO THE INTEREST OF THE COMPANY.

QTY	REMARKS	ITEM NO.	DESCRIPTION	UNIT	QTY	UNIT	QTY	UNIT	QTY	UNIT	QTY	UNIT	QTY	UNIT	QTY	UNIT	QTY	UNIT
01	B.O.	023	TERMINAL BOX FOR EXCITOR															
01	B.O.	022	FLEXIBLE CONDUIT															
01	B.O.	021	CABLE 2x2mm ² 2m FOR CT. SEC.															
020																		
60	B.O.	019	CONDUIT HOLDER PC16															
01	B.O.	018	CABLE 4x2mm ² 22m FOR HEATER															
01	B.O.	017	SLIP RING BOX FOR 4x2x200V															
01	FOR HEATER																	
01	B.O.	015	CABLE 3x2mm ² 15m FOR EXC. & MOTOR															
01	B.O.	014	CABLE BINDER															
02																		
013	RUBBER BUSH 25x40																	
02	B.O.	012	HEATER 250W															
03																		
011	HEATER Eco4 TYPE																	
010																		
009	BRG.RTD																	
008	AIR RTD																	
007	CLAMP A18																	
006	CLAMP A28																	
005	HEX.SCREW M6x12																	
004	SPRING WASHER B-6																	
003	TERMINAL BOX FOR BLOWER MOTOR																	
002	FLAME PROOF CABLE																	
001	RTD & RTD TERMINAL BOX																	

TECHNICAL REQUIREMENT:-

- ALL UNUSED OPENING IN TERMINAL BOXES ARE CLOSED BY IT.2.1 & 2.2.

ADDN INFORMATION
W.D. 46099 A 275-11
REVISIONS OF PRINT
AME-1

TYPE OF PRODUCT
1DN 5132

NAME OF CUSTOMER/PROJECT
M/S. BURCKHARDT COMPANY FOR BORB. BINA

DESIGNER
BHARAT HEAVY ELECTRICALS LTD.

SCALE
N.T.S.

DATE
18.10.17

APPROVED
BY
DATE

DRG. UPDATED.

WIRING ARRGT.

DRAWING NO.
14031040385

SHEET NO. 01

NO. OF SHEET 01

SIZE A1

BHARAT HEAVY ELECTRICALS LIMITED BHOPAL**(AC MACHINES ENGINEERING DIVISION)****ANNEXURE -1****Scope of supply of Aux. Cables/Cable conduits & holders for:-****1. M/S NEUMAN & ESSER FOR PETRONET LNG (W.O. 45079A275-11)**

Following items are required, details as follows:

1. Cable 4C x 6 Sq.mm Qty : 25 Mtrs. per machine.

FLAME RETARDANT, PVC INSULATED COPPER CABLE OF SIZE- 4C X 6 SQ.MM, MAX. DIA 13.0MM, MULTI STRAND, NOMINAL VOLTAGE U_o/U : 300/500V CONFIRMING TO IS 694/1990 OR EQUIVALENT INTERNATIONAL STANADARD.

2. Cable 3C x 4 Sq.mm Qty : 15 Mtrs. per machine.

FLAME RETARDANT, PVC INSULATED COPPER CABLE OF SIZE- 3C X 4 SQ.MM, MAX. DIA 10.0MM, MULTI STRAND, NOMINAL VOLTAGE U_o/U : 300/500V CONFIRMING TO IS 694/1990 or OR EQUIVALENT INTERNATIONAL STANADARD.

3. Cable 7C x 4 Sq.mm Qty : 05 Mtrs. per machine.

FLAME RETARDANT, PVC INSULATED COPPER CABLE OF SIZE- 7C X 4 SQ.MM, MAX. DIA 14.0MM, MULTI STRAND, NOMINAL VOLTAGE U_o/U : 300/500V CONFIRMING TO IS 694/1990 OR EQUIVALENT INTERNATIONAL STANADARD

4. Metallic flexible Conduit PG 16 Qty : 35 Mtrs. per machine.

GI OR BETTER MATERIAL FLEXIBLE CONDUIT.

5. Metallic Conduit Holder PG16 and accessories as required to mount the cable & conduit.

Qty : 60 Nos. per machine.

6. Lugs and Accessories Qty : As required.

7. Labour charges

Scope of Work : Erection and commissioning on 02 machines.

- I. Scope of work for supplier includes supply and fixing of all items on motor at BHEL Works in consultation with AME Divn.
- II. Complete cabling on motors shall be laid in Metallic cable conduit and properly fixed with holder.
- III. All hardware required for fixing shall also be included in scope of supply.



Vaibhav Panchbhai
Manager / AME
BHEL, Bhopal