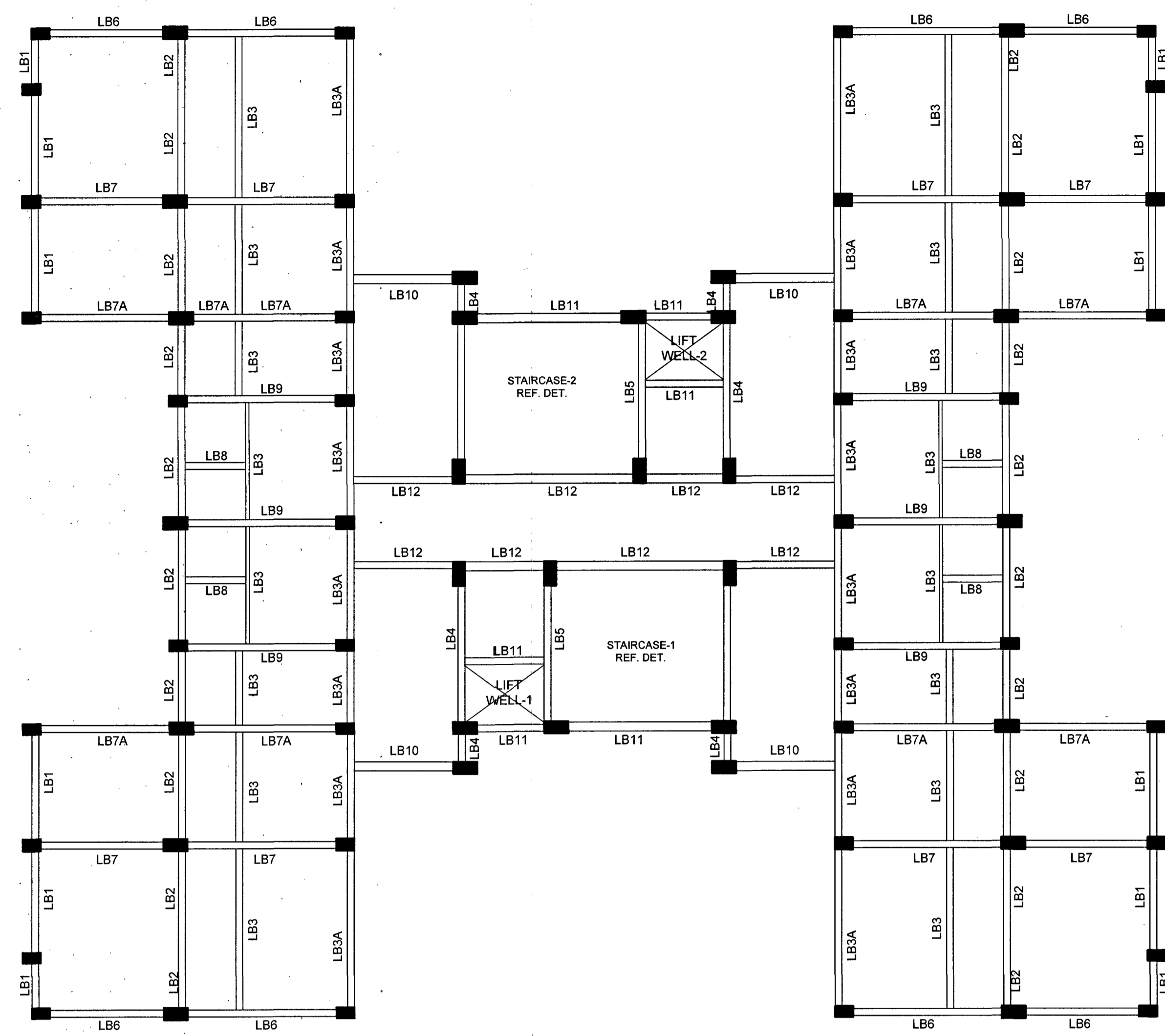


LAYOUT OF GROUND FLOOR LINTEL BEAMS
FOR DOORS, WINDOWS & OPENINGS (WHEREVER NOT SPECIFIED)
REF. SCHEDULE OF LINTEL ON SHEET NO. 02/11 OF THIS DRG

SCHEDULE OF LINTEL BEAMS

BEAM NO.	SIZE OF BEAM		REINFORCEMENT				SIDE FACE REINF. ON EACH FACE	SPACER BARS @ 600 C/C	REMARKS
	BREADTH	DEPTH	BOTTOM BARS		TOP BARS				
			THROUGHOUT	EXTRA BAR AT MIDDLE	THROUGHOUT	EXTRA BAR AT SUPPORT	AT SUPPORT (REFER TD)	BALANCE PORTION (AT MIDDLE)	
LINTEL BEAMS									
LBG1	230	350	3-#16	2-#12	3-#16	2-#12	#8 @ 70 c/c	#8 @ 70 c/c	- #25
LBG2	230	350	3-#16	-	3-#16	2-#12	#8 @ 70 c/c	#8 @ 70 c/c	- #25
LBG3	230	350	3-#16	-	3-#16	-	#8 @ 70 c/c	#8 @ 110 c/c	-
LBG4	230	350	3-#16	-	3-#16	-	#8 @ 70 c/c	#8 @ 70 c/c	-



LAYOUT OF TYPICAL FLOOR LINTEL BEAMS
(FIRST FLOOR TO FOURTH FLOOR)
FOR DOORS, WINDOWS & OPENINGS (WHEREVER NOT SPECIFIED)
REF. SCHEDULE OF LINTEL ON SHEET NO. 02/11 OF THIS DRG

SCHEDULE OF LINTEL BEAMS

BEAM NO.	SIZE OF BEAM		REINFORCEMENT				SIDE FACE REINF. ON EACH FACE	SPACER BARS @ 600 C/C	REMARKS
	BREADTH	DEPTH	BOTTOM BARS		TOP BARS				
			THROUGHOUT	EXTRA BAR AT MIDDLE	THROUGHOUT	EXTRA BAR AT SUPPORT	AT SUPPORT (REFER TD)	BALANCE PORTION (AT MIDDLE)	
LINTEL BEAMS									
LB1	230	350	3-#16	-	3-#16	-	#8 @ 70 c/c	#8 @ 100 c/c	-
LB2	230	350	3-#16	2-#16	3-#16	3-#16	#8 @ 70 c/c	#8 @ 100 c/c	- #25
LB3	230	350	3-#12	-	3-#12	-	#8 @ 70 c/c	#8 @ 100 c/c	-
LB3A	230	350	3-#12	-	3-#16	-	#8 @ 70 c/c	#8 @ 100 c/c	-
LB4	230	350	3-#16	2-#16	3-#16	3-#16	#8 @ 70 c/c	#8 @ 100 c/c	- #25
LB5	230	350	3-#16	-	3-#16	3-#16	#8 @ 70 c/c	#8 @ 100 c/c	- #25
LB6	230	350	3-#16	2-#16	3-#16	3-#16	#8 @ 70 c/c	#8 @ 100 c/c	- #25
LB7	230	350	3-#16	-	3-#16	2-#12	#8 @ 70 c/c	#8 @ 100 c/c	- #25
LB7A	230	350	3-#16	-	3-#16	2-#12	#8 @ 70 c/c	#8 @ 100 c/c	- #25
LB8	230	350	3-#12	-	3-#12	-	#8 @ 70 c/c	#8 @ 100 c/c	-
LB9	230	350	3-#16	-	3-#16	2-#12	#8 @ 70 c/c	#8 @ 100 c/c	- #25
LB10	230	350	3-#16	-	3-#12	-	#8 @ 70 c/c	#8 @ 100 c/c	-
LB11	230	350	3-#16	-	3-#16	2-#12	#8 @ 70 c/c	#8 @ 100 c/c	- #25
LB12	230	350	3-#16	-	3-#16	2-#16	#8 @ 70 c/c	#8 @ 100 c/c	- #25

- NOTES:**
- CONTRACTOR TO CHECK AND VERIFY ALL DIMENSIONS BEFORE EXECUTION OF THE WORK
 - ALL DIMENSIONS ARE GIVEN IN MILLIMETERS UNLESS OTHERWISE SPECIFIED
 - FIGURED DIMENSIONS SHALL ONLY BE FOLLOWED.
 - EXECUTIVE AUTHORITY SHALL CHECK AND VERIFY ALL THE DRGS BEFORE TAKING EXECUTION IN HAND.
 - COLS SHOWN AS TO STOP AT RESPECTIVE SLAB LEVEL.
 - FOR GENERAL STRUCTURAL NOTES & STANDARD TYPICAL DETAILS, REFER SHEET NOS. 1/4 TO 3/4 OF DRAWING NO.
 - THE FOUNDATION IS DESIGNED FOR ASSUMED NET SBC OF 14.00 T/SQM AT 2.50 M DEPTH FROM NGL FOR BUILDING. GE TO CHECK THE ACTUAL SBC BEFORE EXECUTION. IN CASE OF ANY VARIATION THE MATTER SHALL BE REFERRED TO THIS OFFICE FOR REDESIGN. THE FOUNDATION SHALL NOT REST ON TREACHEROUS, ORGANIC OR FILLED UP SOIL.

SL NO	DATE	DESCRIPTION	INITIAL

REVISION

JOB NO. W - 2138
PROVN OF MD ACCN FOR OFFRS, JCOs & ORs AT FEROPUR

16 MAJOR (G+4)

LAYOUT & SCHEDULE OF GROUND FLOOR LINTEL BEAMS AND TYPICAL FLOOR LINTEL BEAMS

DATE	10 OCT 2025	SHEET NO.	07
DRAWN	NB SUB SANDEEP SHARMA	CHIEF ENGINEER	JALANDHAR ZONE
CHKD			11
SCALE	DRG NO CEJZ/SD- 1938/2025		

THIS DRG IS BASED ON DRG NO CEJZ/SD-1936/2025 SHEET NO 07/11

AAD(DES)

 DIRECTOR (DESIGN)
FOR CHIEF ENGINEER