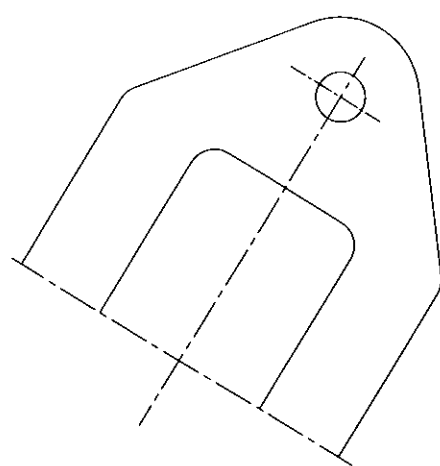
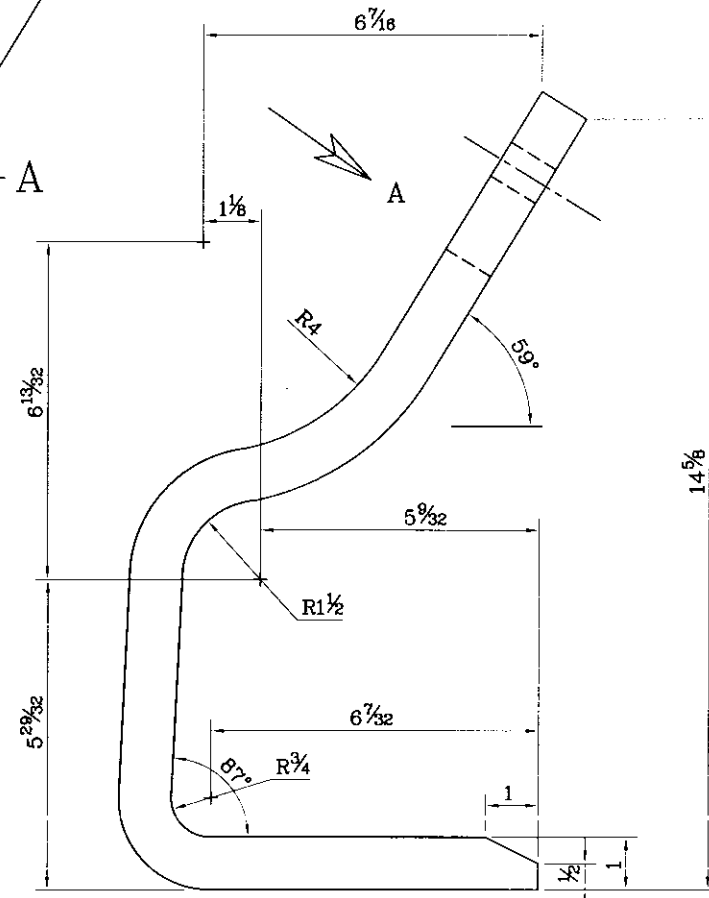


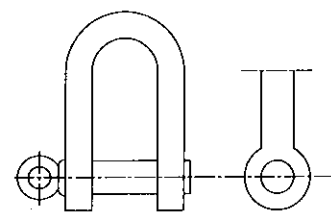
ALT.	DESCRIPTION	DATE	INITIAL



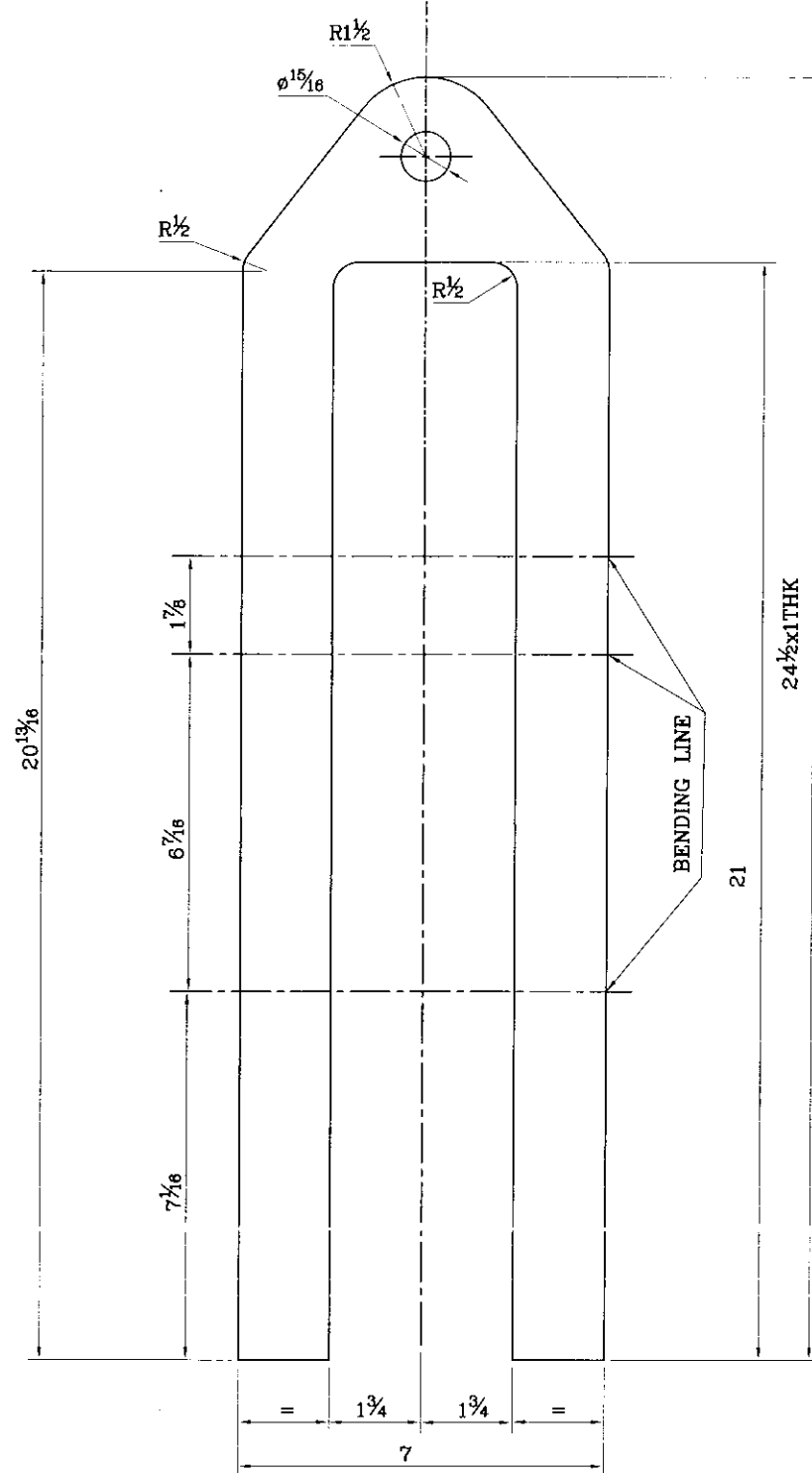
VIEW FROM - A



1



2



DEVELOPED VIEW

- NOTE:-
1. ALL DIMENSIONS IN INCHES / MM UNLESS OTHERWISE SPECIFIED.
 2. BREAK ALL SHARP CORNERS $\frac{1}{8}$ "
 3. STAMP ON DRG. NO. SK23AL0444.....
COMP. NO.
 4. TOLERANCE ON DECIMAL DIMENSIONS NOT OTHERWISE SPECIFIED ± 0.002 " / 0.05MM
FRACTIONAL ± 0.010 " / 0.25 MM NOT CUMULATIVE
 5. ALL SAFETY NORMS TO BE FOLLOWED LIKE LOAD TESTING (CHECKING OF MATL DEFECTS ETC.
 6. LOAD TO BE LIFT 3000 KG

REF. NO.	DESCRIPTION	MATL.	QTY PER SET	REMARKS
02	CHAIN SHACKLE WITH SCREW PIN	—	3	DRG NO-SC00M20013 #3
01	HOOK	IS-2062	3	24X7X1THK

TITLE:-		LIFTING TACKLE FOR WHEEL		
TYPE OF LOCO.		-		
USED ON:-		-		
REF. NO.		-		
SCALE:- 1:1		JIG AND TOOL OFFICE DIESEL LOCO WORKS VARANASI		
DATE:- 22.11.07				
SHEET NO. 01	NO. OF SHEET 01	DRAWN SD INDRAJEET	CHECKED SD INDRAJEET	Sr. S.E. SD B.P. PANDEY
23.11.07	23.11.07	24.11.07	P.E./T	SD S.K. KATIYAR 24.11.07

DO NOT SCALE THE DRAWING IF IN DOUBT ASK

GRADE NO.	N1	N2	N3	N4	N5	N6	N7	N8	N9	N10	N11	N12
Ra UM	0.025	0.050	0.1	0.2	0.4	0.8	1.6	3.2	6.3	12.5	25	50
SYMBOL	▽▽▽	▽▽	▽	▽	▽	▽	▽	▽	▽	▽	▽	▽

Sl. No 3-550
अमितेश्वर्य
24.11.07
FOR RECORD