

**Name of Firm:**

**TENDER NO:**

**Conflict of Interest:**

**Treatment of cases regarding conflict of interest:**

*The bidder notes that a conflict of interest would said to have occurred in the tender process and execution of the resultant contract, in case of any of the following situations:*

- i) If its personnel have a close personal, financial, or business relationship with any personnel of BHEL who are directly or indirectly related to the procurement or execution process of the contract, which can affect the decision of BHEL directly or indirectly;*
- ii) The bidder (or his allied firm) provided services for the need assessment/ procurement planning of the Tender process in which it is participating;*
- iii) Procurement of goods directly from the manufacturers/ suppliers shall be preferred. However, if the OEM/ Principal insists on engaging the services of an agent, such agent shall not be allowed to represent more than one manufacturer/ supplier in the same tender.  
Moreover, either the agent could bid on behalf of the manufacturer/ supplier or the manufacturer/ supplier could bid directly but not both. In case bids are received from both the manufacturer/ supplier and the agent, bid received from the agent shall be ignored. However, this shall not debar more than one Authorised distributor (with/ or without the OEM) from quoting equipment manufactured by an Original Equipment Manufacturer (OEM) in procurements under a Proprietary Article Certificate.*
- iv) A bidder participates in more than one bid in this tender process. Participation in any capacity by a Bidder (including the participation of a Bidder as a partner/ JV member or sub-contractor in another bid or vice-versa) in more than one bid shall result in the disqualification of all bids in which he is a party. However, this does not limit the participation of an entity as a sub-contractor in more than one bid if he is not bidding independently in his own name or as a member of a JV.*

*The Bidder declares that they have read and understood the above aspects, and the bidder confirms that such conflict of interest does not exist and undertakes that they will not enter into any illegal or undisclosed agreement or understanding, whether formal or informal with other Bidder(s), in this regard. This applies in particular to prices, specifications, certifications, Subsidiary contracts, submission or non-submission of bids or any other actions to restrict competitiveness or to introduce cartelization in the bidding process. **In case, the Bidder is found having indulged in above activities, the same will be considered as a violation of the tender conditions, and suitable action shall be taken by BHEL as per extant policies/ guidelines.***

<p>Are You registered as Micro or Small as per MSME ACT-2006.  <b>Bidder to Provide Valid Latest Udyam as applicable.</b>  <b>(Tick(√) wherever applicable)</b></p>		Micro Enterprises
		Small Enterprises
		Medium Enterprises (MSE Benefit Not Applicable)
		None of above.
<p>Any Bidder falling under Micro or Small Enterprises category shall furnish the following details &amp; submit documentary evidence/ Govt. Certificate etc. in support of the same along with their techno-commercial offer.  <b>(Tick(√) wherever applicable)</b></p>		ST Owned
		SC Owned
		Women Owned
		Others(Excluding ST/SC Owned & Women Owned)
		Not Applicable.
<p><i>If the bidder does not furnish the above in the tender, offer shall be processed construing that the bidder is not falling under MSE category.</i></p>		

ITM NO	MAT CD	UNIT CD	ITM DESCRIPTION	ITM QTY	DELIVERY DATE
1	BP9047584821	NO	COPPER FLEXIBLE TO DRG.NO.36500900098 REV.NO.03 ITEM NO.001, LENGTH 680MM, PVC FACTOR OF COPPER IS 1:7.99. BASE RATE OF BME COPPER IS RS 1294.142 PER KG.	96	0-90 days
2	BP9048117488	NO	COPPER FLEXIBLE TO DRG.NO.36500900098 REV.NO.03 ITEM NO.003, LENGTH 620 MM. PVC FACTOR OF COPPER IS 1:7.36. BASE RATE OF BME COPPER IS RS 1294.142 PER KG.	96	0-90 days
3	BP9047584813	NO	COPPER FLEXIBLE TO DRG.NO.46500900086 REV.NO.03 ITEM NO.001, LENGTH 1725 MM, PVC FACTOR OF COPPER IS 1: 16.58. BASE RATE OF BME COPPER IS RS 1294.142 PER KG.	64	0-90 days
4	BP9047584805	NO	COPPER FLEXIBLE TO DRG.NO.46500900086 REV.NO.03 ITEM NO.002, LENGTH 1660MM, PVC FACTOR OF COPPER IS 1:15.95. BASE RATE OF BME COPPER ISRS 1294.142 PER KG.	64	0-90 days
5	BP9047584775	NO	COPPER FUSE CONNECTION TO DRG NO: 36500300109 REV00 ITEM 001, PVC FACTOR 1:0.31, BASE RATE OF COPPER @ RS 1294.142/KG, BME INDEX APPLICABLE FOR PVC CALCULATION.	484	0-90 days
6	BP9047584783	NO	COPPER FLEXIBLE CONNECTION FOR DIODE FUSE TO DRG NO: 46500300069 REV04, PVC FACTOR 1:1.48, BASE RATE OF COPPER @ RS.1294.142/KG, BME INDEX APPLICABLE FOR PVC CALCULATION.	484	0-90 days
7	BP9047584791	NO	COPPER FLEXIBLE TO DRG.NO.36500900098 REV.NO.03 ITEM NO.002, LENGTH 680MM, PVC FACTOR OF COPPER IS 1:6.7. BASE RATE OF BME COPPER IS RS 1294.142 PER KG.	96	0-90 days
8	BP9048117518	NO	COPPER FLEXIBLE TO DRG.NO.36500900098 REV.NO.03 ITEM NO.004, LENGTH 620 MM. PVC FACTOR OF	96	0-90 days

ITM NO	MAT CD	UNIT CD	ITM DESCRIPTION	ITM QTY	DELIVERY DATE
			COPPER IS 1:6.1 BASE RATE OF BME COPPER IS RS 1294.142 PER KG.		
9	BP9048117470	NO	COPPER FLEXIBLE TO DRG.NO.46500900086 REV.NO.03 ITEM NO.003, LENGTH 1725 MM, PVC FACTOR OFCOPPER IS 1: 13.9. BASE RATE OF BME COPPER IS RS 1294.142 PER KG.	64	0-90 days
10	BP9048117526	NO	COPPER FLEXIBLE TO DRG.NO.46500900086 REV.NO.03 ITEM NO.004, LENGTH 1660MM, PVC FACTOR OF COPPER IS 1:13.4. BASE RATE OF BME COPPER ISRS 1294.142 PER KG.	64	0-90 days

**FORMAT OF MAKE-IN-INDIA DECLARATION CERTIFICATE**

**(In compliance to the Public Procurement (Preference to Make-in-India) Order 2017 issued by Department of Promotion of Industry and Internal Trade (Public Procurement Section), Ministry of Commerce and Industry, Government of India, dated 16.06.2020, 04.03.2021 & 19.07.2024 (as amended).**

**TO WHOMSOEVER IT MAY CONCERN**

M/s.....certifies that the following component wise breakup indicated below is in line with the Make in India policy with respect to the value addition to the total price quoted by us against this GeM Bid No.....

M/s..... also solemnly declare that component wise breakup given below are true and correct and understand that *“false declarations will be breach of Code of Integrity under Rule 175(1)(i)(h) of General Financial Rule (GFR) for which a bidder or its successors can be debarred for up to two years as per Rule 151 (iii) of the General Financial Rules along with such other actions as may be permissible under law”*.

M/s..... also solemnly declare and understand that incase the given *“data does not meet the stipulated Local content requirement and the category of the supplier changes from Class 1 to Class 2/Non-Local or from Class 2 to Non-Local, a penalty up to 10% on the contract value may be imposed”*.

Sl. No.	Name of the item	Name of the manufacturer	Country of Origin	% value to the total cost	Location (s) and address at which the Local value addition is made
1.					
2.					
3.					
4.					
5.					
6.					
7.					
8.					
<b>Total value (in %) to the total cost</b>					

**Note: Points to be noted while certifying the declaration:**

- i. For item(s) sold by Bidder as Re-seller, OEM Certificate for country of origin is to be submitted.
- ii. Supply of Re-packaged/Re-furnished/Re-branded “IMPORTED” product should be treated as “Re-selling of imported products” and must not be included while calculation of Local content.

- iii. Services such as Transportation, Insurance, Installation, Commissioning, Training and after sales service support like AMC/CMC, etc. must not be included as Local content.
- iv. All item(s) under PLI Scheme shall be treated as deemed Class II Local supplier for that item(s) unless they have minimum local content equal to or higher than that notified for Class I Local supplier for that item.
- v. In case of procurement value in excess of Rs 10 Cr, the supplier shall required to provide a certificate from the statutory auditor or cost auditor of the company (in the case of companies) or from a practicing cost accountant or practicing charter accountant (in respect of suppliers other than companies) giving the percentage of Local content.

I/We hereby declare that all the details furnished above are true. If any information is found incorrect as per points mentioned above, than I agree to actions as per Rule of GFR mentioned above.

Date :

Place : (Signature of authorized signatory of the Bidder/Supplier with stamp)

**Document No: CEE/04/PQR/485 Rev 00****Additional Terms and Conditions for Bidders (including Pre-Qualification requirements)****BHEL Tender No.----- COPPER FLEXIBLE****Additional Terms and Conditions:**

1. Supplier should submit technical offer on their letter head stating offered part no. Item should be clearly marked/highlighted in Data Sheet / Drawings/Catalogues of the product(s) offered in the bid. Data Sheet / Drawings / Catalogues of the product(s) offered in the bid, are to be uploaded along with the bid documents. Buyers can match and verify the Data Sheet with the product specifications offered. In case of any unexplained mismatch of technical parameters, the bid is liable for rejection. Bidder to submit compliance to BHEL drawings.
2. Self-declaration certificate duly sealed and signed stating "Offered items are exactly same as per enquiry and there are no deviations".
3. OEM self-declaration certificate duly seal and signed stating that he is an OEM to be submitted. Bid reference number should be mentioned in OEM declaration certificate. In case Bidder is not OEM but its Reseller then bidder to submit valid authorisation certificate from OEM with the bid.
4. **Registration / Empanelment Requirement:** Item(s) as per BHEL tender enquiry are required for Large Current Rectifier for M/s HEG MANDIDEEP Bidders must submit M/s HEG MANDIDEEP approval for indented items before bid opening date. In case bidder is authorised dealer/distributor/ channel partner of an OEM, the bidder should submit offer-meeting criteria of registration/ empanelment requirement.  
Prospective bidders, if not having M/s HEG MANDIDEEP approval as stated above, are advised to get themselves approved with the said registration authority before bid opening date, otherwise their bid/s will not be considered for further evaluation.
5. Acceptance to Price Variation Clause (PVC) as per Annexure 1 (Sealed signed Annexure 1).
6. Bidder's offer is liable to be rejected if they don't upload any of the certificates/ documents sought in the bid document, ATC and corrigendum if any.

*Pramod Kumar Meher*  
18-04-2026  
**PRAMOD KUMAR MEHER**  
Manager, CEE

*Mandak Kumar*  
18/4/26  
**Mandak Kumar**  
Sr. DGM, CEE

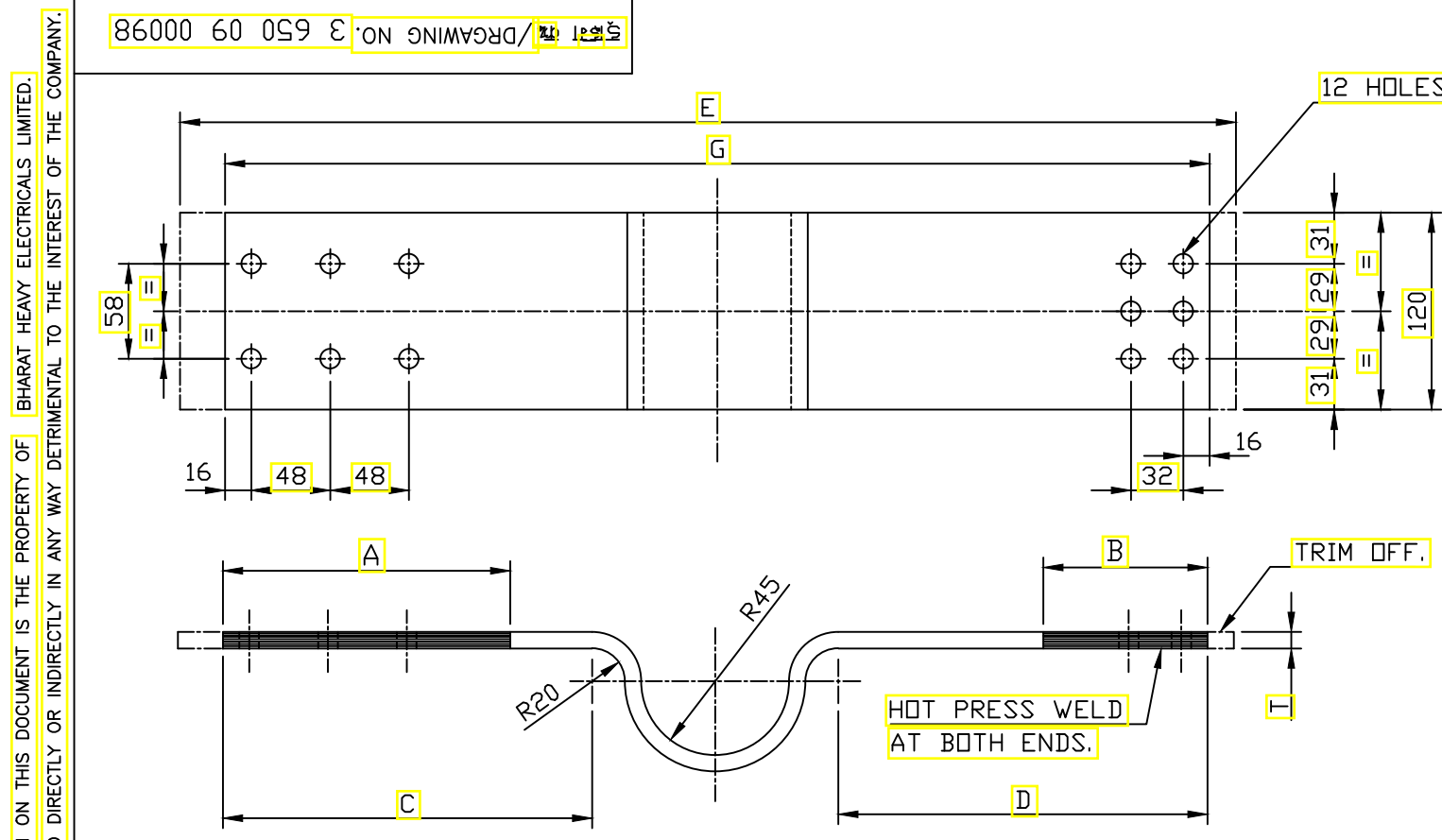
**Approved By: HOD - CEE, OFE & CXX**

*Sanjiv Kumar Biswas*  
18/4/2026  
रंजीत कुमार बिस्वास Sanjiv Kumar Biswas  
उपर महाप्रबंधक (विभाग प्रमुख) / AGM(HOD)  
सी.ई.ई. विभाग / C.E.E. Division  
बी.एच.ई.एल., भोपाल / B.H.E.L., BHOPAL



FIRST ANGLE PROJECTION

(ALL DIMENSIONS ARE IN mm.)



ITEM NO	A	B	C	D	G		E	T (IN MM)	USED NO SHEET
					FINISH LENGTH	DEVLDP LENGTH			
001	175	100	225	225	680	770	800	9.6	12
002	175	100	225	225	680	770	800	8.0	10
003	175	100	225	225	620	710	740	9.6	12
004	175	100	225	225	620	710	740	8.0	10
005	275	175	397.5	397.5	945	1030	1050	9.6	12
006	275	175	397.5	397.5	945	1030	1050	8.0	10
007	300	200	427.5	427.5	1005	1090	1110	9.6	12
008	300	200	427.5	427.5	1005	1090	1110	8.0	10
009	300	200	322.5	322.5	795	880	900	8.0	10
010									

THE INFORMATION ON THIS DOCUMENT IS THE PROPERTY OF BHARAT HEAVY ELECTRICALS LIMITED. IT MUST NOT BE USED DIRECTLY OR INDIRECTLY IN ANY WAY DETRIMENTAL TO THE INTEREST OF THE COMPANY.

NOTES:-

1. TRIM OFF SURPLUS LENGTH AFTER FORMING
2. (A)&(B) ENDS TO BE HOT DIP TINNED AFTER HOT PRESS WELD.
3. AFTER FORMING THE FLEXIBLE mV DROP AT 1000 AMPS. BETWEEN (A) & (B) OF FLEXIBLE SHOULD BE LESS THAN 20mV.
4. CONDUCTIVITY OF COPPER FLEXIBLE CONNECTION- CONNECTION SHOULD BE 100 %.
5. HOT PRESS WELDED COPPER PORTION SHOULD WITHSTAND THE METALLOGRAPHY TEST.
6. MATERIAL 0.8TKX120 ELECTROLITE COPPER STRIP TO AA12007.

REF. DRG. NO. SIGN. & DATE INVENTORY No.

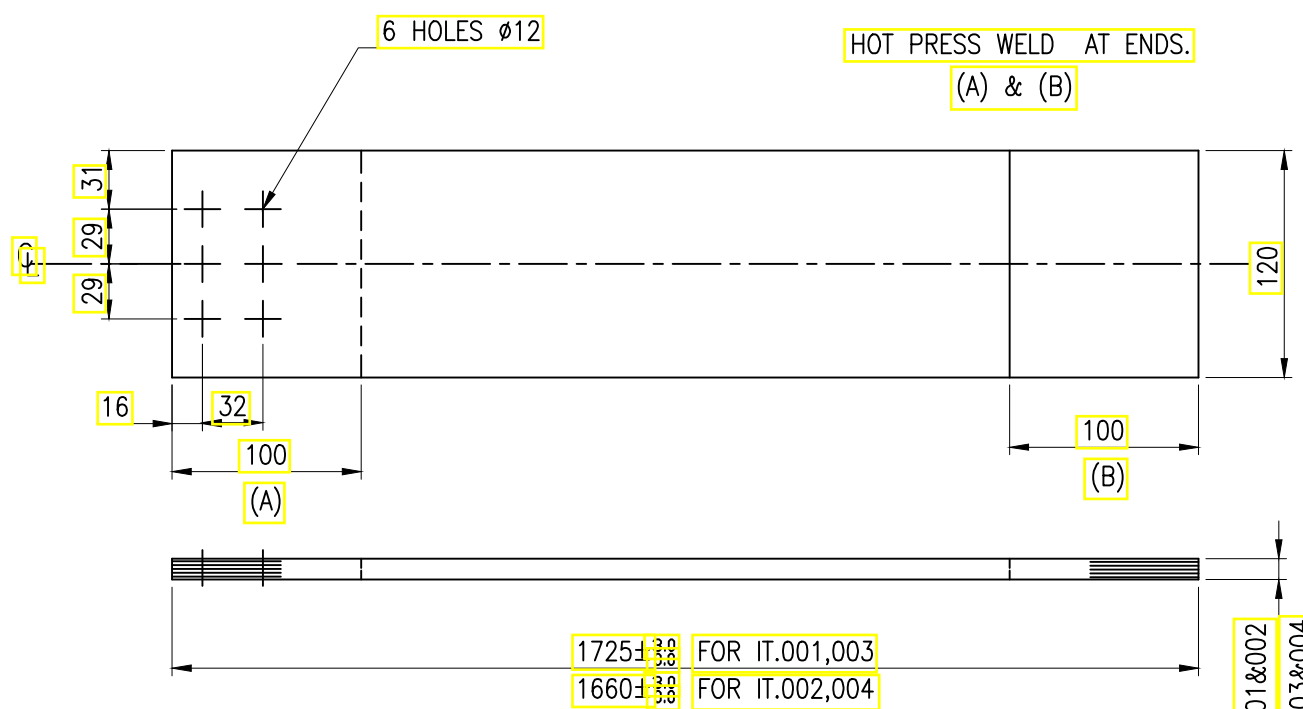
ADDITIONAL INFORMATION LCD CUBICLE	
STATUS OF DRAWING	M
DISTRIBUTION OF PRINTS	
OFFICE COPY	- 1
RFM	- 3
TCX (RFM)	- 1

उत्पाद का प्रकार या ग्राहक/परियोजना का नाम		M/S.	
TYPE OF PRODUCT OR NAME OF CUSTOMER/PROJECT		B/S.	
बि.सच.ई.सल.	भारत हेवी इलेक्ट्रिकल्स लिमिटेड	जाना DRN.	नाम /NAME
BHEL	भोपाल	जॉर्जा CKD.	हस्त /SIGN.
BHARAT HEAVY ELECTRICALS LTD.		स्वकृत APPD.	दि./DATE
BHOPAL			18.3.96
विभाग DEPT.	उत्प. टोल. नाप की श्रेणी UNTO. DIMS. GR.	जुनपात SCALE	भारत वि. ग. WEIGHT (K.G.)
CEE	REF CG 06503	1:4	उत्से. ड्राईंग का संदर्भ REF. TO ASSY.
कोड CODE.	407		सद संख्या ITEM NO.
शीर्षक /TITLE		ड्राईंग क्र./DRGAWING NO.	
COPPER FLEXIBLE FOR TRANSF. & RECTIFIER CONNECTION		3 650 09 00098	
		शीट क्र./SHT.NO	शीटों की सं./NO.OF.SHT.
		01	01

REV	DATE	ALTERED	BY	REV	DATE	ALTERED	BY	REV	DATE	ALTERED	BY
03	21.06.18	CHECKED	MANOJ RAJPUT	02	30.03.17	CHECKED	MANOJ RAJPUT	01	5.2.05	CHECKED	C.K.MATHEW
		APPROVED	MANOJ RAJPUT			APPROVED	MANOJ RAJPUT			APPROVED	
DRG. MODIFIED AND ITEM ADDED				DRG. MODIFIED AND ITEM ADDED				DRG.COMPUTARISED.			

REV. 02	DATE 21.09.11	ALTERED CHECKED APPROVED	REV. 03	DATE 04.4.26	ALTERED CHECKED APPROVED	HRB. AV. MK.	ADDITIONAL INFORMATION
DRG. COMPUTERISED			ITEM 003, 004 ADDED.			STATUS OF DRAWING	
DCA NO. 24605			DCA NO. 29456			DISTRIBUTION OF PRINTS	

THE INFORMATION ON THIS DOCUMENT IS THE PROPERTY OF BHARAT HEAVY ELECTRICALS LIMITED. IT MUST NOT BE USED DIRECTLY OR INDIRECTLY IN ANY WAY DETRIMENTAL TO THE INTEREST OF THE COMPANY.



- NOTES:-**
- HOT PRESS WELD ENDS A&B TO BE DIPTINNED.
  - AFTER FORMING THE FLEXIBLE mV DROP AT 1000A. RMS. BETWEEN A&B OF FLEXIBLE SHOULD BE LESS THAN 20mV.
  - CONDUCTIVITY OF CU. & FLEXIBLE CONNECTION SHOULD BE 100% & HOT PRESS WELDED COPPER PORTION SHOULD WITHSTAND THE MATALLOGRAPHY TEST.

9.0/8.8 FOR IT. 001&002  
7.4/7.2 FOR IT. 003&004

REMARKS	ITEM NO.	DESCRIPTION	STD	MATL. CODE	A/C	UNIT	UNIT WT.	QTY.
	004	9//0.8TKx120x1660LG. ELECTROLYTIC GR CPR.		AA12007			12.87 KG.	1660
	003	9//0.8TKx120x1725LG. ELECTROLYTIC GR CPR.		AA12007			13.32 KG.	1725
	002	11//0.8TKx120x1660LG. ELECTROLYTIC GR CPR. STRIP		AA12007			15.95 KG.	1660
	001	11//0.8TKx120x1725LG. ELECTROLYTIC GR CPR. STRIP		AA12007			16.58 KG.	1725

SIGN. & DATE	विभागा DEPT. CEE कोड CODE 407 REF.CG06503	अन.टाल.नाप की त्रेणी UNTOL. DIMS. GR. REF.CG06503	अनुपात SCALE N.T.S.	भार (कै.ग्रा.) WEIGHT(KG) --	नाम / NAME M. PRASAD	हस्ता. /SIGN Sd/-	दि. /DATE 19.03.96	चे र की संख्या NO.OF VAR. --
					नाम / NAME M.G.J.	हस्ता. /SIGN Sd/-	दि. /DATE 19.03.96	चे र की संख्या NO.OF ITEM 004
INVENTORY NO.	कम्प्यूटर ड्राइंग फाइल क्र 46500900086	भा.स.ई.एल. भारत हेवी इलेक्ट्रिकल्स लिमिटेड भोपाल BHARAT HEAVY ELECTRICALS LTD. BHOPAL	इन्ड्रिंग क्र. /DRAWING NO. 4 650 09 00086	पुन. /REV 03	इन्ड्रिंग क्र. /DRAWING NO. 4 650 09 00086	पुन. /REV 03	इन्ड्रिंग क्र. /DRAWING NO. 4 650 09 00086	पुन. /REV 03
					इन्ड्रिंग क्र. /DRAWING NO. 4 650 09 00086	पुन. /REV 03	इन्ड्रिंग क्र. /DRAWING NO. 4 650 09 00086	पुन. /REV 03