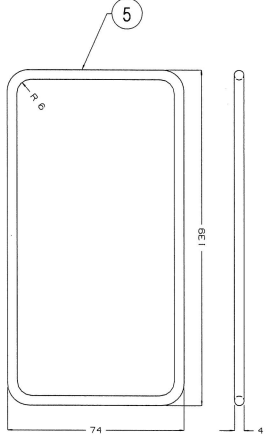
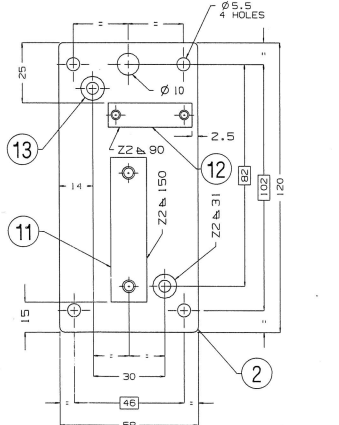
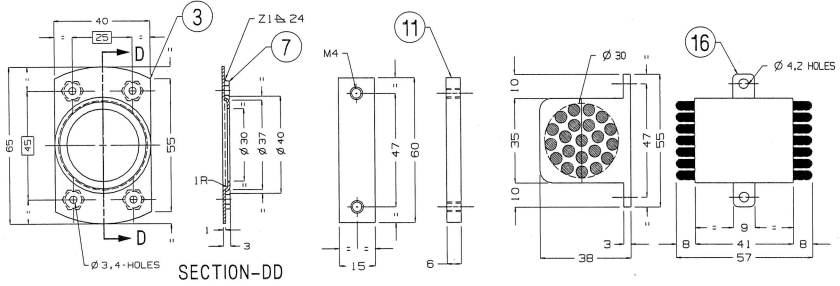
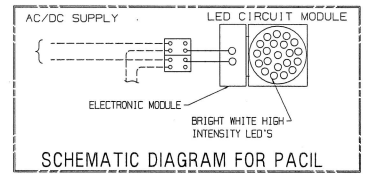
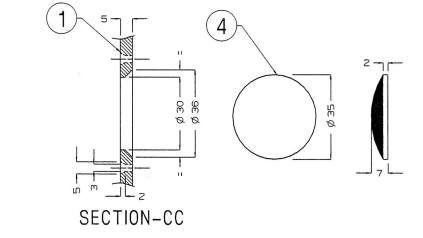
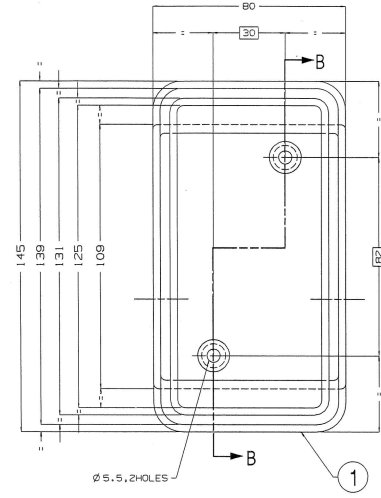
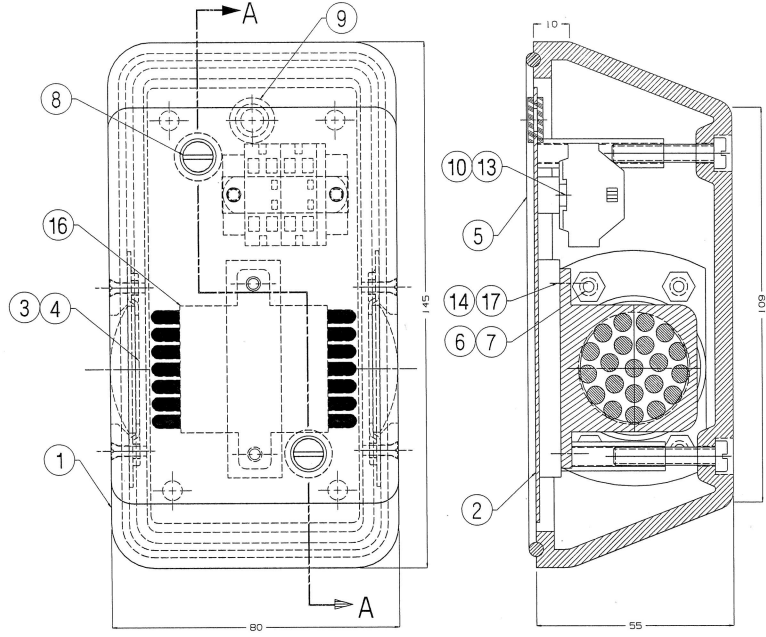


ALT. NO.	ALT. DATE	ZONE	ALTERATIONS	AUTHORITY
0	01/08/2019	ALL	1. NOTE-7 MODIFIED.	DIC. NO. ED190008



10. THE LED CIRCUIT MODULE SHALL BE MADE OF NON METALIC PBT MATERIAL & UNIVERSAL DESIGN SUITABLE FOR AC/DC SUPPLY. THE OPERATING VOLTAGE SHALL VARY FROM 90V TO 140V WITH 15% RIPPLE.

9. TERMINAL CONNECTOR SHALL BE OF CAGE CLAMP TYPE WAGO/PHENIX MAKE AS INDICATED IN TABLE-1

8. ITEM-1 SHALL BE CAST ALUMINIUM, THE OUTER SURFACE OF THE FITTING SHALL HAVE SMOOTH FINISH FREE FROM BURRS.

7. THE LENS SHALL BE RED COLOUR TO SPEC. NO. IRS15-7-92, IT SHALL BE FREE FROM BUBBLES AND SCRATCHES ETC.

6. CENTRE LINE OF LED'S AND SIDE LENSES SHALL BE PERFECTLY ALIGNED.

5. MANUFACTURER'S INSIGNIA SHALL BE SCREEN PRINTED ON AL-PLATE AND P.O. NO. & S.NO. IN THE FORM OF 'YYMMNN' WHERE 'YY' STANDS FOR YEAR, 'MM' STANDS FOR MONTH AND 'NN' STANDS FOR RUNNING S.NO. SHALL BE PUNCHED ON IT AS SHOWN IN LEGEND PLATE AND PROVIDED INSIDE THE FITTING.

4. ONLY TIG WELDING SHALL BE DONE AS PER THE REQUIREMENT, NO OTHER WELDING IS ACCEPTABLE.

3. ALL STEEL ITEMS EXCLUDING HARDWARE SHALL BE GIVEN SURFACE TREATMENT FOR ANTI-RUST & ANTI-CORROSION BEFORE FINISHING WITH POWDER COATING. THICKNESS OF POWDER COATING SHALL NOT BE LESS THAN 60 MICRONS TO WHITE COLOUR (SHADE NO. 042 "IFB WHITE" OF M/S BERGER OR SIMILAR IN M/S ASIAN / M/S NEROLAC MAKE PAINT) WITH GLOSSY FINISH.

2. FRAMED MOUNTING DIMENSIONS ARE TO BE STRICTLY ADHERED TO BY JIG PUNCHING.

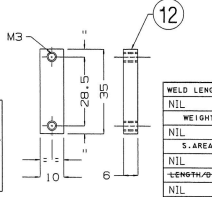
1. ALL DIMENSIONS IN MM.

LEGEND PLATE

MANU. INSIGNIA	DATE:
0	S. NO. - 0
P. O. NO.	

TABLE-1
DETAIL OF TERMINAL CONNECTOR

DESCRIPTION	CAT. NO.	QTY/FITTING
4-CONDUCTOR TERMINAL STRIP	(261-202) OF M/S WAGO AND SIMILAR IN PHENIX MAKE	1



ITEM	DESCRIPTION & DIMENSIONS	QTY	ISSUE NO. (LATEST)	ISSUE NO. (LATEST)	REMARKS
17	CH.HD.SCREW M4X10	2	IS: 1366(LATEST) 4.8, TAB-1	IS: 1367(LATEST) P-14, A2-70	NIL
16	LED CIRCUIT MODULE	1	NIL	NIL	BRIGHT WHITE HIGH INTENSITY LED'S
15	TERMINAL STRIP WITH FIXING FLANGES	1	NIL	NIL	SEE NOTE-9
14	PLAIN WASHER Ø 4.5	2	IS: 2016(LATEST) T-2, TY-A	IS: 1367(LATEST) P-14, A2-70	NIL
13	ROUND BOSS Ø 10X35 (MS)	2	IS: 2062(LATEST) Fe-410MC	NIL	NIL
12	PLAT 6X10X35	1	IS: 2062(LATEST) Fe-410MC	NIL	NIL
11	PLAT 6X15X60	1	IS: 2062(LATEST) Fe-410MC	NIL	NIL
10	CH.HD.SCREW M3X6	2	IS: 1366(LATEST) 4.8, TAB-1	IS: 1367(LATEST) P-14, A2-70	NIL
9	RUBBER GROMMET	1	IS: S220(LATEST)	NIL	A-6, 3, E=1
8	CH.HD.SCREW M5X30	2	IS: 1366(LATEST) 4.8, TAB-1	IS: 1367(LATEST) P-14, A2-70	NIL
7	HEX.HD.NUT M2.5	8	IS: 1364(LATEST) P-3, TAB-1	IS: 1367(LATEST) P-14, A2-70	NIL
6	CSK.HD.SCREW M2.5X10	8	IS: 1365(LATEST)	IS: 1367(LATEST) P-14, A2-70	NIL
5	RUBBER PACKING	1	EPDM SPONGE MTS046, REV-3	NIL	NIL
4	LENS	2	NIL	NIL	SEE NOTE-7
3	LENS HOLDING BRACKET	2	IS: 1078(LATEST) Fe-410	NIL	NIL
2	BOTTOM PLATE 1X58X120	1	IS: 691(LATEST) GR-304	NIL	SURFACE FINISHING NO. 1, T-8
1	TOP COVER	1	NIL	CAST ALUMINIUM	NIL

WELD LENGTH

WGT

SCALE: S5E/ED

DRG. NO. PL. NO. NIL

DRG. NO. LW 7609R

DATE OF FIRST ISSUE: 20/05/2016

DATE: 20/05/2016

DATE: 20/05/2016

ANY MANUAL ALTERATION SHALL AUTOMATICALLY RENDER THIS DRAWING INVALID.	DETAIL DRGS STARTING WITH "LI" ARE INTERNAL REFERENCE LISTS ONLY AND ARE NOT FOR ISSUE.
FOR UNTOLERANCED DIMENSIONS REFER MDG0008	DATE OF FIRST ISSUE: 20/05/2016